

GHPA1

Accesorios suministrados con bomba standard:

Chaveta de disco (código 522054),
tuerca hexagonal M10x1 (código 523015),
arandela elástica (código 523004).

Salidas standard: roscas M6 profundidad útil 13 mm.

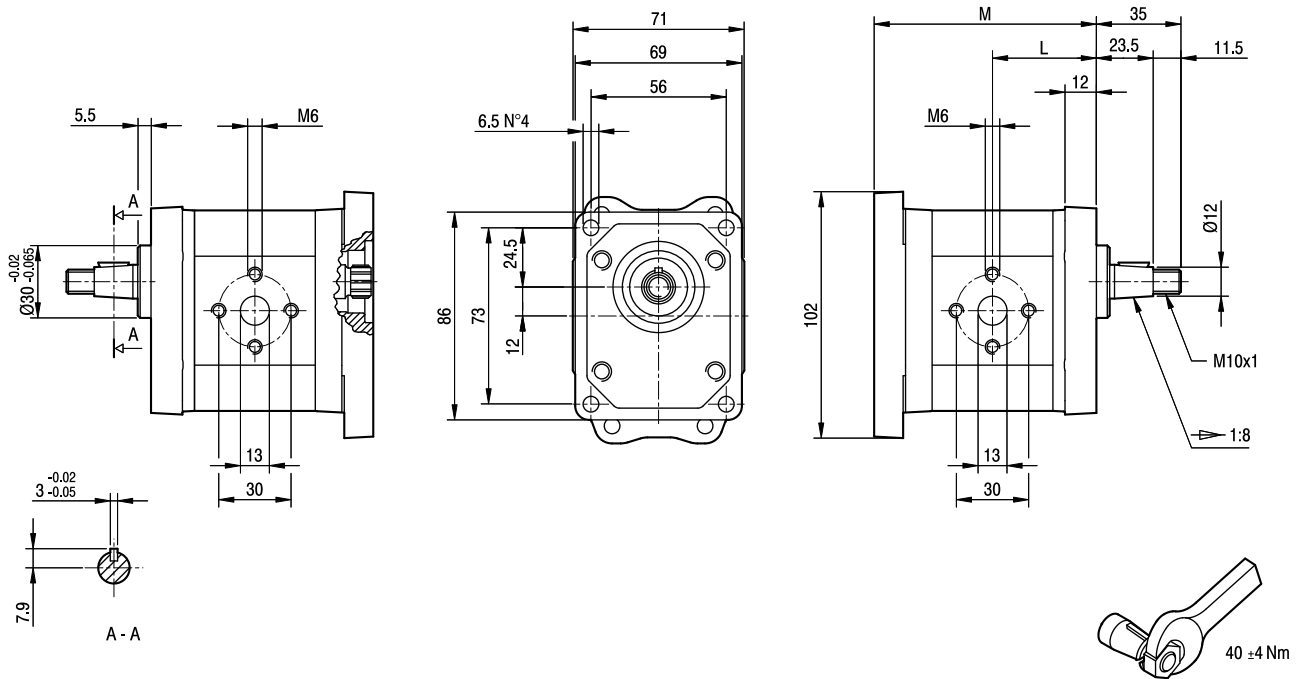
Accessories supplied with standard pump:
woodruff key (code 522054),

M10x1 exagonal nut (code 523015),
washer (code 523004).

Standard ports: M6 threads depth 13 mm.

IMPULSIÓN
OUTLET

ASPIRACIÓN
INLET



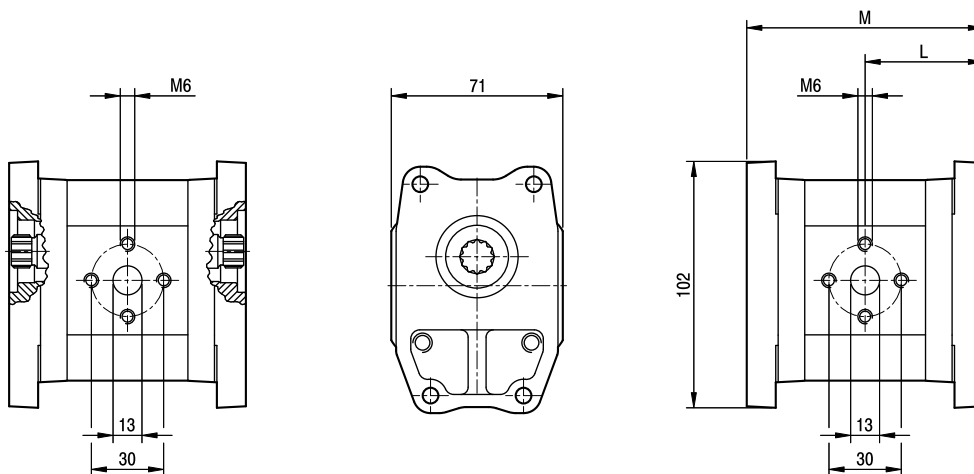
TIPO TYPE	CILINDRADA DISPLACEMENT	CAUDAL a 1500 giros/min FLOW at 1500 rev/min	PRESI ^o N M _i XIMA MAX PRESSURE			VELOCIDAD M _i XIMA MAX SPEED	DIMENSIONES DIMENSIONS	
			P ₁	P ₂	P ₃		L	M
	cm ³ /giro [cm ³ /rev]	litros /min [litres/min]	bar	bar	bar	giros/min [rpm]	mm	mm
GHPA1-D-2	1,4	2,0	270	290	310	6000	40	86
GHPA1-D-3	2,1	2,9	270	290	310	6000	41	88
GHPA1-D-4	2,8	3,9	270	290	310	5000	42	90
GHPA1-D-5	3,5	4,9	270	290	310	5000	43	92
GHPA1-D-6	4,1	5,9	270	290	310	4000	44	94
GHPA1-D-7	5,2	7,4	260	275	290	4000	45,5	97
GHPA1-D-9	6,2	8,8	260	275	290	3800	47	100
GHPA1-D-11	7,6	10,8	230	245	260	3200	49	104
GHPA1-D-13	9,3	13,3	210	225	240	2600	51,5	109
GHPA1-D-16	11,0	15,7	200	215	230	2200	54	114
GHPA1-D-20	13,8	19,7	180	195	210	1800	58	122

GHPI1

Salidas standard: roscas M6 profundidad útil 13 mm. Standard ports: M6 threads depth 13 mm.

IMPULSIÓN
OUTLET

ASPIRACIÓN
INLET



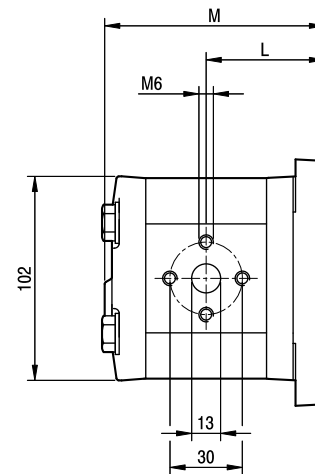
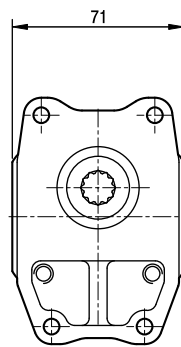
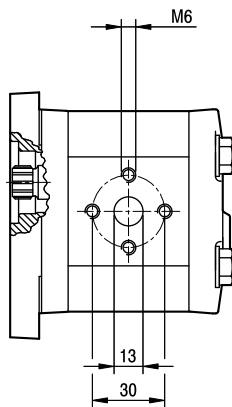
TIPO TYPE	CILINDRADA DISPLACEMENT	CAUDAL a 1500 giros/min FLOW at 1500 rev/min	PRESI" N M _i XIMA MAX PRESSURE			VELOCIDAD M _i XIMA MAX SPEED	DIMENSIONES DIMENSIONS	
			P ₁	P ₂	P ₃		L	M
	cm ³ /giro [cm ³ /rev]	litros /min [litres/min]	bar	bar	bar	giros/min [rpm]	mm	mm
GHPI1-2	1,4	2,0	270	290	310	6000	46	92
GHPI1-3	2,1	2,9	270	290	310	6000	47	94
GHPI1-4	2,8	3,9	270	290	310	5000	48	96
GHPI1-5	3,5	4,9	270	290	310	5000	49	98
GHPI1-6	4,1	5,9	270	290	310	4000	50	100
GHPI1-7	5,2	7,4	260	275	290	4000	51,5	103
GHPI1-9	6,2	8,8	260	275	290	3800	53	106
GHPI1-11	7,6	10,8	230	245	260	3200	55	110
GHPI1-13	9,3	13,3	210	225	240	2600	57,5	115
GHPI1-16	11,0	15,7	200	215	230	2200	60	120
GHPI1-20	13,8	19,7	180	195	210	1800	64	128

GHPP1

Salidas standard: roscas M6 profundidad útil 13 mm. Standard ports: M6 threads depth 13 mm.

IMPULSIÓN
OUTLET

ASPIRACIÓN
INLET



TIPO TYPE	CILINDRADA DISPLACEMENT	CAUDAL a 1500 giros/min FLOW at 1500 rev/min	PRESI" N M _i XIMA MAX PRESSURE			VELOCIDAD M _i XIMA MAX SPEED	DIMENSIONES DIMENSIONS	
			P ₁	P ₂	P ₃		L	M
	cm ³ /giro [cm ³ /rev]	litros /min [litres/min]	bar	bar	bar	giros/min [rpm]	mm	mm
GHPP1-D-2	1,4	2,0	270	290	310	6000	46	85
GHPP1-D-3	2,1	2,9	270	290	310	6000	47	87
GHPP1-D-4	2,8	3,9	270	290	310	5000	48	89
GHPP1-D-5	3,5	4,9	270	290	310	5000	49	91
GHPP1-D-6	4,1	5,9	270	290	310	4000	50	93
GHPP1-D-7	5,2	7,4	260	275	290	4000	51,5	96
GHPP1-D-9	6,2	8,8	260	275	290	3800	53	99
GHPP1-D-11	7,6	10,8	230	245	260	3200	55	103
GHPP1-D-13	9,3	13,3	210	225	240	2600	57,5	108
GHPP1-D-16	11,0	15,7	200	215	230	2200	60	113
GHPP1-D-20	13,8	19,7	180	195	210	1800	64	121

GHPA2

Accesorios suministrados con bomba standard:

Chaveta de disco (código 522057),
tuerca hexagonal M12x1.5
(código 523016),
arandela elástica (código 523005).

Salidas standard: roscas M6 profundidad útil
13 mm, roscas M8 profundidad útil 17 mm.

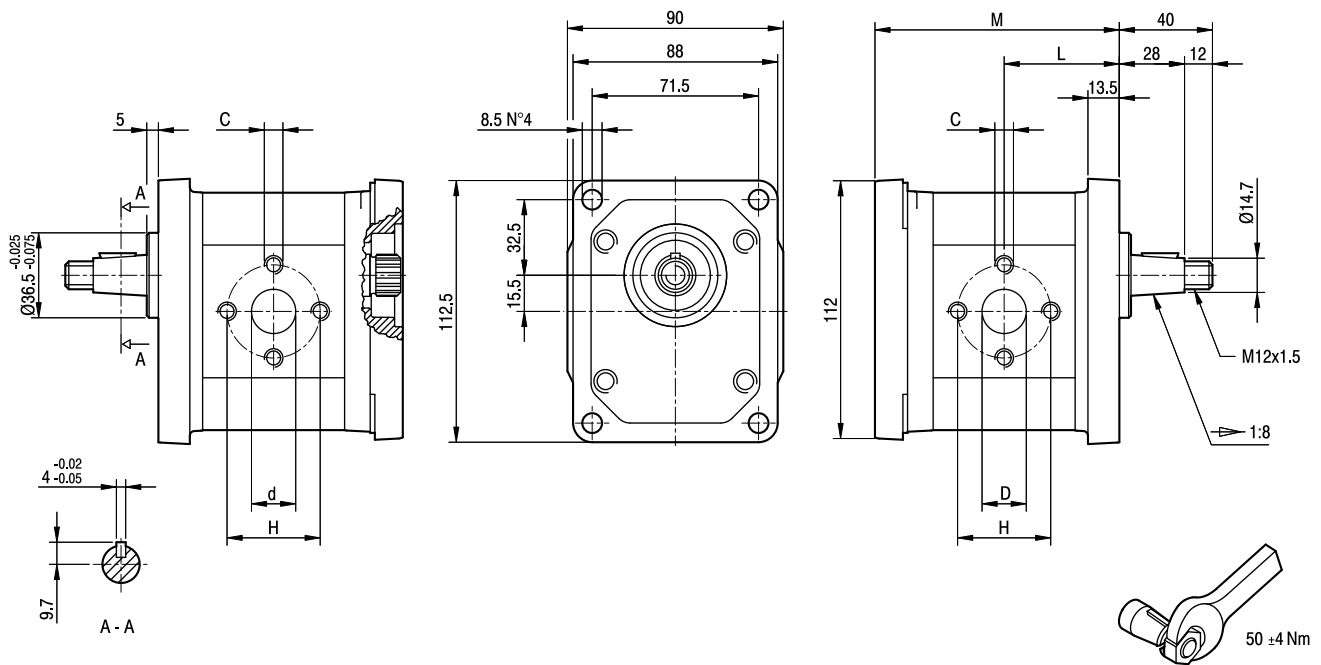
Accessories supplied with the standard pump:

woodruff key (code 522057),
M12x1.5 exagonal nut (code 523016),
washer (code 523005).

Standard ports: M6 threads depth 13 mm,
M8 threads depth 17 mm.

IMPULSIÓN
OUTLET

ASPIRACIÓN
INLET



TIPO TYPE	CILINDRADA DISPLACEMENT	CAUDAL a 1500 giros/min FLOW at 1500 rev/min	PRESI" N M _i XIMA MAX PRESSURE			VELOCIDAD M _i XIMA MAX SPEED	DIMENSIONES DIMENSIONS					
			P ₁	P ₂	P ₃		L	M	d	D	C	H
	cm ³ /giro [cm ³ /rev]	litros /min [litres/min]	bar	bar	bar	giros/min [rpm]	mm	mm	mm	mm	mm	mm
GHPA2-D-6	4,5	6,4	280	295	310	4000	45,5	97	13	13	M6	30
GHPA2-D-9	6,4	9,1	280	295	310	4000	47	100	13	13	M6	30
GHPA2-D-10	7,0	10,0	280	295	310	4000	47,5	101	13	13	M8	40
GHPA2-D-12	8,3	11,8	280	295	310	3500	48,5	103	13	13	M8	40
GHPA2-D-13	9,6	13,7	280	295	310	3000	49,5	105	13	13	M8	40
GHPA2-D-16	11,5	16,4	280	295	310	4000	51	108	13	19	M8	40
GHPA2-D-20	14,1	20,1	260	275	290	4000	53	112	13	19	M8	40
GHPA2-D-22	16,0	22,8	260	275	290	4000	54,5	115	13	19	M8	40
GHPA2-D-25	17,9	25,5	260	275	290	3600	56	118	13	19	M8	40
GHPA2-D-30	21,1	30,1	230	245	260	3200	58,5	123	19	19	M8	40
GHPA2-D-34	23,7	33,7	230	245	260	3000	60,5	127	19	19	M8	40
GHPA2-D-37	25,5	36,4	210	225	240	2800	62	130	19	19	M8	40
GHPA2-D-40	28,2	40,1	200	215	230	2500	64	134	19	19	M8	40
GHPA2-D-50	35,2	50,2	160	175	190	2500	69,5	145	19	21	M8	40

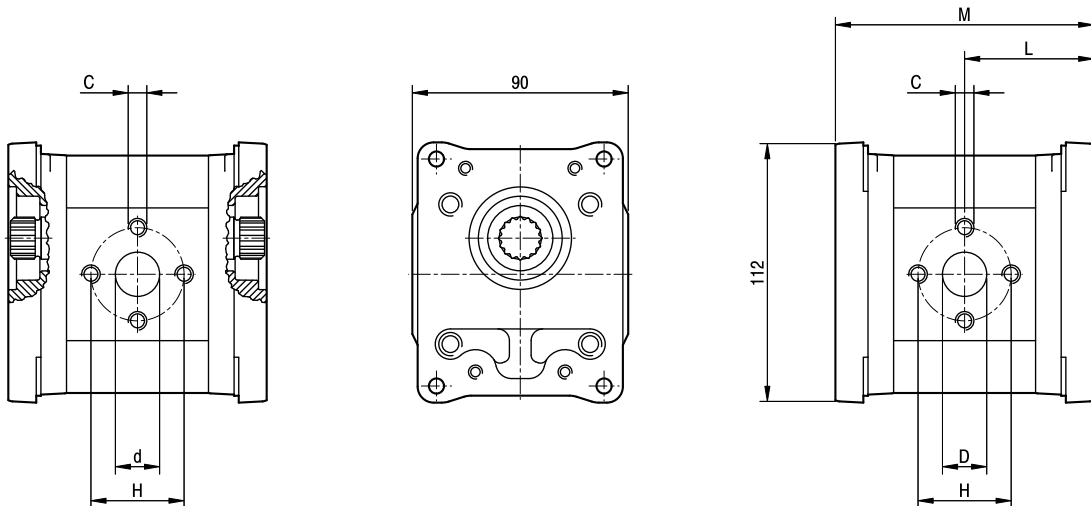
GHPI2

Salidas standard: roscas M6 profundidad útil 13 mm, roscas M8 profundidad útil 17 mm.

Standard ports: M6 threads depth 13 mm, M8 threads depth 17 mm.

IMPULSIÓN
OUTLET

ASPIRACIÓN
INLET



TIPO TYPE	CILINDRADA DISPLACEMENT	CAUDAL a 1500 giros/min FLOW at 1500 rev/min	PRESI ^o N M _i XIMA MAX PRESSURE			VELOCIDAD M _i XIMA MAX SPEED	DIMENSIONES DIMENSIONS					
			P ₁	P ₂	P ₃		L	M	d	D	C	H
	cm ³ /giro [cm ³ /rev]	litros /min [litres/min]	bar	bar	bar	giros/min [rpm]	mm	mm	mm	mm		mm
GHPI2-6	4,5	6,4	280	295	310	4000	51,5	103	13	13	M6	30
GHPI2-9	6,4	9,1	280	295	310	4000	53	106	13	13	M6	30
GHPI2-10	7,0	10,0	280	295	310	4000	53,5	107	13	13	M8	40
GHPI2-12	8,3	11,8	280	295	310	3500	54,5	109	13	13	M8	40
GHPI2-13	9,6	13,7	280	295	310	3000	55,5	111	13	13	M8	40
GHPI2-16	11,5	16,4	280	295	310	4000	57	114	13	19	M8	40
GHPI2-20	14,1	20,1	260	275	290	4000	59	118	13	19	M8	40
GHPI2-22	16,0	22,8	260	275	290	4000	60,5	121	13	19	M8	40
GHPI2-25	17,9	25,5	260	275	290	3600	62	124	13	19	M8	40
GHPI2-30	21,1	30,1	230	245	260	3200	64,5	129	19	19	M8	40
GHPI2-34	23,7	33,7	230	245	260	3000	66,5	133	19	19	M8	40
GHPI2-37	25,5	36,4	210	225	240	2800	68	136	19	19	M8	40
GHPI2-40	28,2	40,1	200	215	230	2500	70	140	19	19	M8	40
GHPI2-50	35,2	50,2	160	175	190	2500	75,5	151	19	21	M8	40

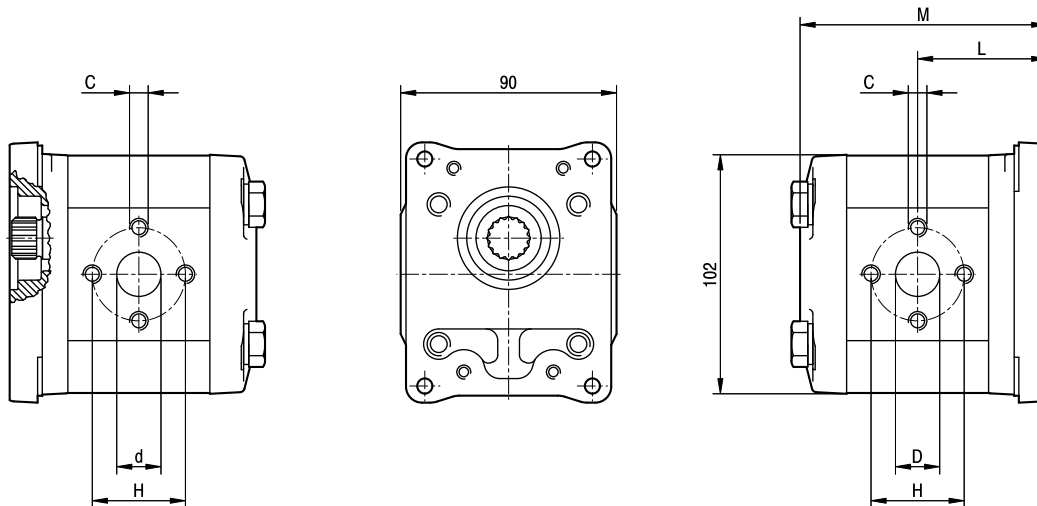
GHPP2

Salidas standard: roscas M6 profundidad útil 13 mm, roscas M8 profundidad útil 17 mm.

Standard ports: M6 threads depth 13 mm, M8 threads depth 17 mm.

IMPULSIÓN
OUTLET

ASPIRACIÓN
INLET



TIPO TYPE	CILINDRADA DISPLACEMENT	CAUDAL a 1500 giros/min FLOW at 1500 rev/min	PRESI° N M _i XIMA MAX PRESSURE			VELOCIDAD M _i XIMA MAX SPEED	DIMENSIONES DIMENSIONS					
			P ₁	P ₂	P ₃		L	M	d	D	C	H
	cm ³ /giro [cm ³ /rev]	litros /min [litres/min]	bar	bar	bar	giros/min [rpm]	mm	mm	mm	mm		mm
GHPP2-D-6	4,5	6,4	280	295	310	4000	51,5	98	13	13	M6	30
GHPP2-D-9	6,4	9,1	280	295	310	4000	53	101	13	13	M6	30
GHPP2-D-10	7,0	10,0	280	295	310	4000	53,5	102	13	13	M8	40
GHPP2-D-12	8,3	11,8	280	295	310	3500	54,5	104	13	13	M8	40
GHPP2-D-13	9,6	13,7	280	295	310	3000	55,5	106	13	13	M8	40
GHPP2-D-16	11,5	16,4	280	295	310	4000	57	109	13	19	M8	40
GHPP2-D-20	14,1	20,1	260	275	290	4000	59	113	13	19	M8	40
GHPP2-D-22	16,0	22,8	260	275	290	4000	60,5	116	13	19	M8	40
GHPP2-D-25	17,9	25,5	260	275	290	3600	62	119	13	19	M8	40
GHPP2-D-30	21,1	30,1	230	245	260	3200	64,5	124	19	19	M8	40
GHPP2-D-34	23,7	33,7	230	245	260	3000	66,5	128	19	19	M8	40
GHPP2-D-37	25,5	36,4	210	225	240	2800	68	131	19	19	M8	40
GHPP2-D-40	28,2	40,1	200	215	230	2500	70	135	19	19	M8	40
GHPP2-D-50	35,2	50,2	160	175	190	2500	75,5	146	19	21	M8	40

GHPA3

Accesorios suministrados con bomba standard:

Chaveta de disco (código 522058),

tuerca hexagonal M14x1.5

(código 523017),

arandela elástica (código 523006).

Salidas standard: roscas M10 profundidad útil 19 mm.

Accessories supplied with the standard pump:

woodruff (code 522058),

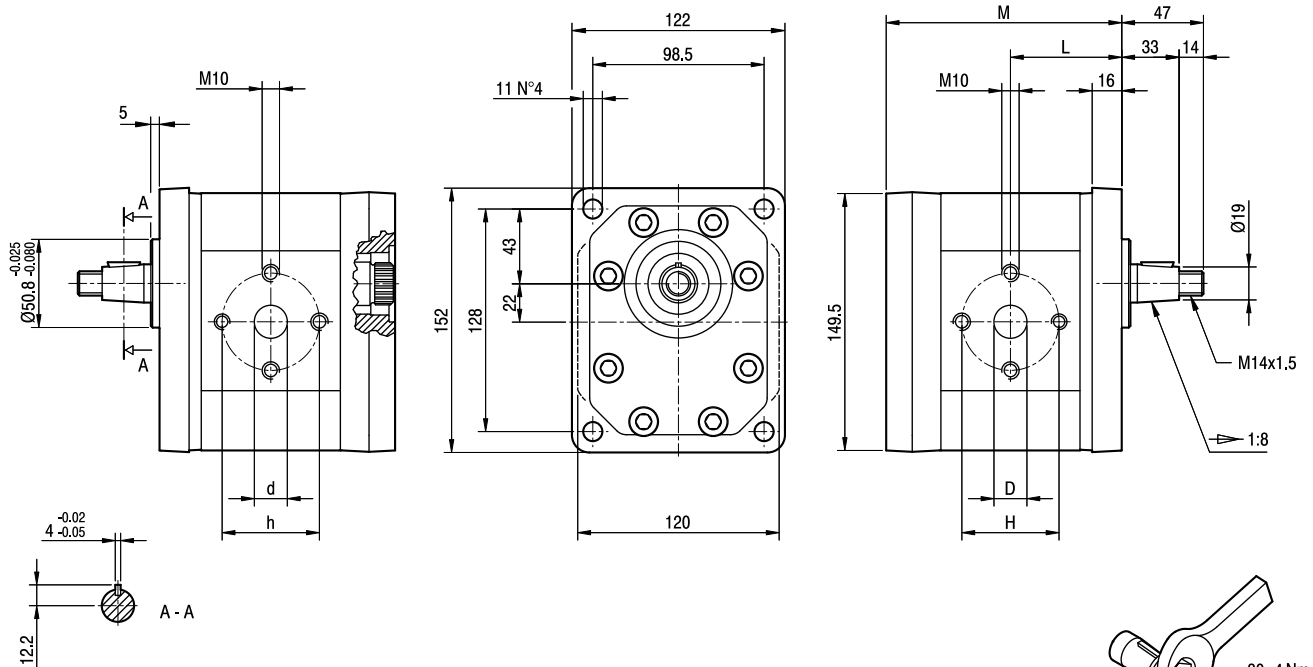
M14x1.5 exagonal nut (code 523017),

washer (code 523006).

Standard ports: M10 threads depth 19 mm.

IMPULSIÓN
OUTLET

ASPIRACIÓN
INLET



TIPO TYPE	CILINDRADA DISPLACEMENT	CAUDAL a 1500 giros/min FLOW at 1500 rev/min	PRESI" N M _i XIMA MAX PRESSURE			VELOCIDAD M _i XIMA MAX SPEED	DIMENSIONES DIMENSIONS					
			P ₁	P ₂	P ₃		L	M	d	D	h	H
	cm ³ /giro [cm ³ /rev]	litros /min [litres/min]	bar	bar	bar	giros/min [rpm]	mm	mm	mm	mm	mm	mm
GHPA3-D-30	20	29	280	295	310	3500	64	135,5	19	27	56	56
GHPA3-D-33	22	31	280	295	310	3500	64,5	136,5	19	27	56	56
GHPA3-D-40	26	37	280	295	310	3000	66	139,5	19	27	56	56
GHPA3-D-50	33	48	270	285	300	3000	68,5	144,5	19	27	56	56
GHPA3-D-60	39	56	260	275	290	3000	70,5	148,5	19	27	56	56
GHPA3-D-66	44	62	250	265	280	2800	72	151,5	27	27	51	51
GHPA3-D-80	52	74	230	245	260	2400	75	157,5	27	27	56	56
GHPA3-D-94	61	87	210	225	240	2800	78	163,5	27	33	51	62
GHPA3-D-110	71	101	200	215	230	2500	81,5	170,5	27	33	51	62
GHPA3-D-120	78	112	180	195	210	2300	84	175,5	27	33	51	62
GHPA3-D-135	87	124	160	175	190	2000	87	181,5	27	33	51	62

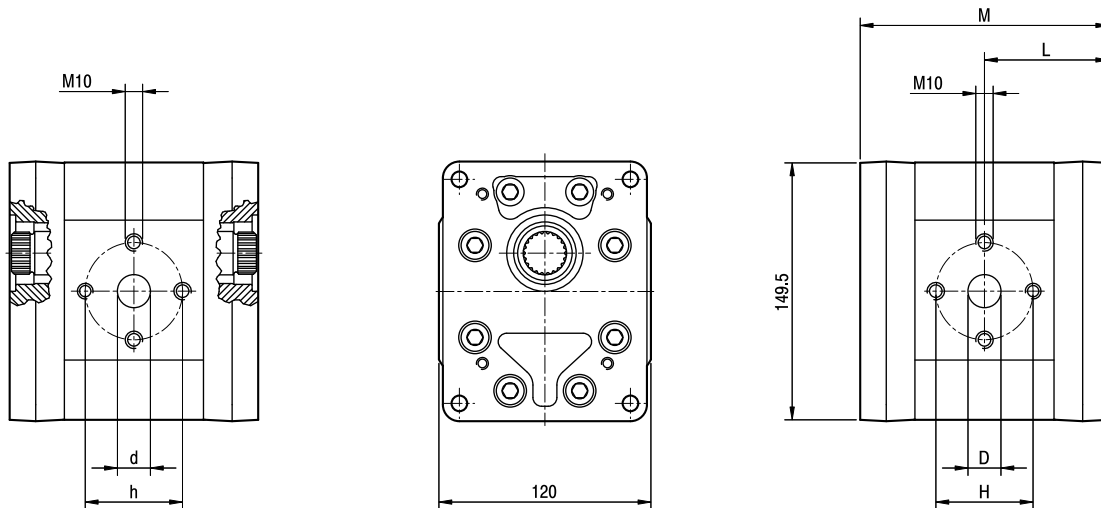
GHPI3

Salidas standard: roscas M10 profundidad útil 19 mm.

Standard ports: M10 threads depth 19 mm.

IMPULSIÓN
OUTLET

ASPIRACIÓN
INLET



TIPO TYPE	CILINDRADA DISPLACEMENT	CAUDAL a 1500 giros/min FLOW at 1500 rev/min	PRESI ^o N M _i XIMA MAX PRESSURE			VELOCIDAD M _i XIMA MAX SPEED	DIMENSIONES DIMENSIONS					
			P ₁	P ₂	P ₃		L	M	d	D	h	H
	cm ³ /giro [cm ³ /rev]	litros /min [litres/min]	bar	bar	bar	giros/min [rpm]	mm	mm	mm	mm	mm	mm
GHPI3-30	20	29	280	295	310	3500	71,5	143	19	27	56	56
GHPI3-33	22	31	280	295	310	3500	72	144	19	27	56	56
GHPI3-40	26	37	280	295	310	3000	73,5	147	19	27	56	56
GHPI3-50	33	48	270	285	300	3000	76	152	19	27	56	56
GHPI3-60	39	56	260	275	290	3000	78	156	19	27	56	56
GHPI3-66	44	62	250	265	280	2800	79,5	159	27	27	51	51
GHPI3-80	52	74	230	245	260	2400	82,5	165	27	27	56	56
GHPI3-94	61	87	210	225	240	2800	85,5	171	27	33	51	62
GHPI3-110	71	101	200	215	230	2500	89	178	27	33	51	62
GHPI3-120	78	112	180	195	210	2300	91,5	183	27	33	51	62
GHPI3-135	87	124	160	175	190	2000	94,5	189	27	33	51	62

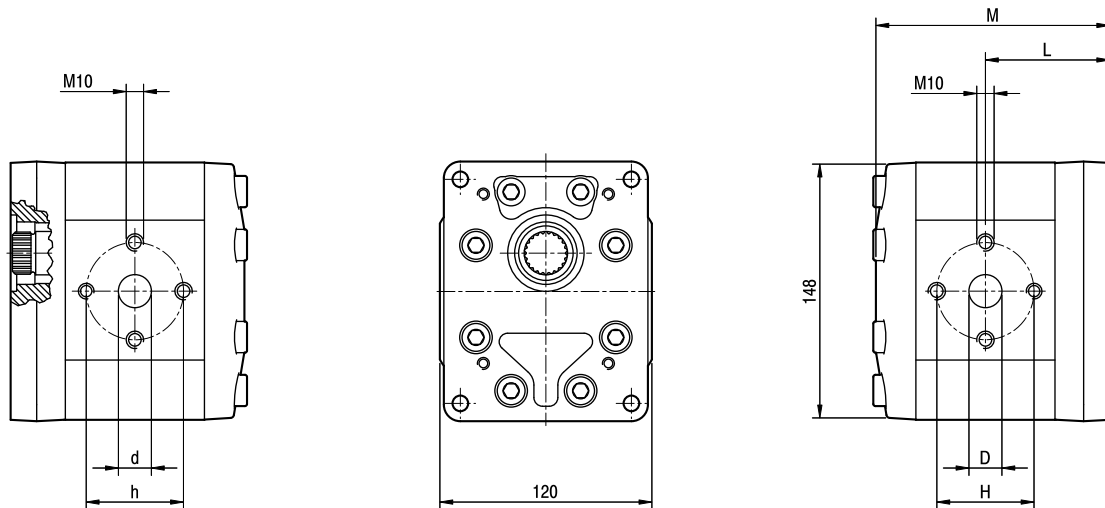
GHPP3

Salidas standard: roscas M10 profundidad útil 19 mm.

Standard ports: M10 threads depth 19 mm.

IMPULSIÓN
OUTLET

ASPIRACIÓN
INLET



TIPO TYPE	CILINDRADA DISPLACEMENT	CAUDAL a 1500 giros/min FLOW at 1500 rev/min	PRESI" N M _i XIMA MAX PRESSURE			VELOCIDAD M _i XIMA MAX SPEED	DIMENSIONES DIMENSIONS					
			P ₁	P ₂	P ₃		L	M	d	D	h	H
	cm ³ /giro [cm ³ /rev]	litros /min [litres/min]	bar	bar	bar	giros/min [rpm]	mm	mm	mm	mm	mm	mm
GHPP3-D-30	20	29	280	295	310	3500	71,5	134,5	19	27	56	56
GHPP3-D-33	22	31	280	295	310	3500	72	135,5	19	27	56	56
GHPP3-D-40	26	37	280	295	310	3000	73,5	138,5	19	27	56	56
GHPP3-D-50	33	48	270	285	300	3000	76	143,5	19	27	56	56
GHPP3-D-60	39	56	260	275	290	3000	78	147,5	19	27	56	56
GHPP3-D-66	44	62	250	265	280	2800	79,5	150,5	27	27	51	51
GHPP3-D-80	52	74	230	245	260	2400	82,5	156,5	27	27	56	56
GHPP3-D-94	61	87	210	225	240	2800	85,5	162,5	27	33	51	62
GHPP3-D-110	71	101	200	215	230	2500	89	169,5	27	33	51	62
GHPP3-D-120	78	112	180	195	210	2300	91,5	174,5	27	33	51	62
GHPP3-D-135	87	124	160	175	190	2000	94,5	180,5	27	33	51	62