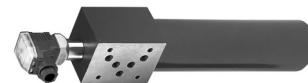


# Pressure Filters

## OFPH03, OFPH05 Series

Flows to 22 L/min (6 USgpm)  
Pressures to 310 bar (4500 PSI)

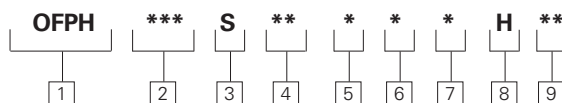


### Features and Benefits

- Designed to comply with ANSI specifications and ISO cleanliness standards.
- Visual, electrical, and electrical indicators with lamp options for system design flexibility.
- Poppet type by-pass valve construction.
- Wide range of element lengths for maximum design flexibility.
- High efficiency replacement elements in standard configurations (H-Pak) to meet Target Cleanliness Levels.
- Designed to mount directly underneath D03, D05 and CETOP Valves. The fluid is filtered prior to entering the valve "P" (Pressure) Port.

### DESIGN SPECIFICATIONS

<b>Rated flow:</b>	<b>Length 3</b>	23 L/min (6 USgpm)
	<b>Length 5</b>	45 L/min (12 USgpm)
	<b>Length 6</b>	53 L/min (14 USgpm)
<b>Fluid Compatibility:</b>	Compatible with most petroleum oil, water glycol, oil-in-water and water-in-oil fluids. Optional seals available for phosphate esters.	
<b>Temp range:</b>	26°C to +121°C (-15°F to +250°F)	
<b>Pressure Rating:</b>	<b>Operating:</b>	310 bar (4500 psi)
	<b>Fatigue:</b>	310 bar (4500 psi)
<b>Material:</b>	<b>Head Bowl</b>	Ductile Iron Carbon Steel
<b>Dry weight:</b> (Approximate)	<b>Length 3</b>	2,3 kg (5.1 lbs)
	<b>Length 5</b>	4,7 kg (10.4 lbs)
	<b>Length 6</b>	5,4 kg (11.9 lbs)



### OFPH Series Filter Model Codes

#### Sample model code:

OFPH031SAATNBH03

#### [1] Filter Series - OFPH

#### [2] Bowl Length

mm (inch)

**031** - OFPH031 226 (8.9)

**051** - OFPH051 254 (10.0)

**052** - OFPH052 325 (12.8)

#### [3] Valve Options

**S** - Without bypass valve

#### [4] Port Options

**AA** - Modular stacking,  
Bowl Side A

**BB** - Modular stacking,  
Bowl Side B

#### [5] Indicator Options

**TN** - Visual 115 PSI,  
No Connector

**JN** - No Indicator (plug),  
No Connector

**TB** - Electrical 115 PSI,  
Brad Harrison

**TJ** - Electrical 115 PSI,  
Hirshman w 24 volt light

**TK** - Electrical 115 PSI,  
Hirshman w 115 volt light

**TL** - Electrical 115 PSI,  
Hirshman w 230 volt light

**TH** - Electrical 115 PSI,  
Hirshman

#### [6] Seals

**B** - Buna-N

**V** - Viton-A

#### [7] Element Series (collapse rating)

**H** - 207 bar (3000 psi)

#### [8] Fluid Cleanliness Rating

**Code**      **Target fluid  
cleanliness level**

**03**      16/14/12 or better

**05**      18/16/14 or better

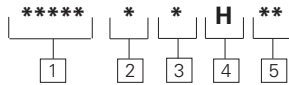
**10**      20/18/15 or better

**20**      22/19/16 or better

# Pressure Filters

Flows to 22 L/min (6 USgpm)  
Pressures to 310 bar (4500 PSI)

## OFPH03, OFPH05 Series



### V0603, V0604 and V0114 Series Replacement Element Model Codes

Sample model code:  
V0603B3H03

#### 1 Element Series

**V0603** - For use with OFPH031 series filters  
**V0604** - For use with OFPH051 series filters  
**V0114** - For use with OFPH052 series filters

#### 2 Seals

**B** - Buna-N  
**V** - Viton-A

#### 3 Element Length

**3** - OFPH031 3.7 (V0603 only)  
**5** - OFPH051 3.5 (V0604 only)  
**6** - OFPH052 6 (V0114 only)

#### 4 Element Collapse Pressure

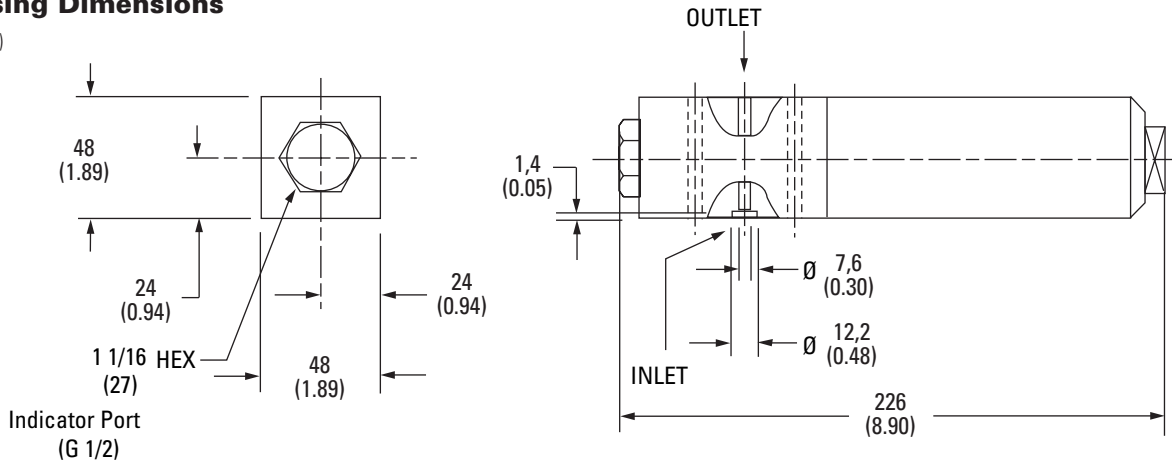
**H** - 207 bar (3000 psi)

#### 5 Fluid Cleanliness Rating

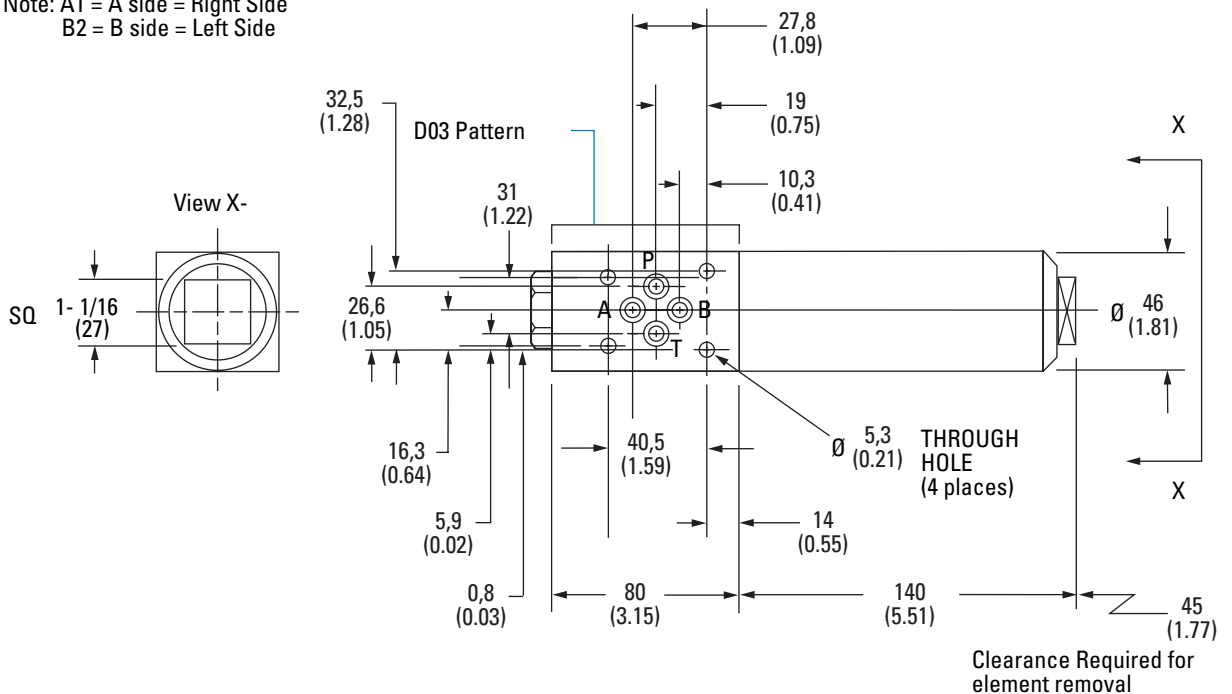
<b>03</b>	16/14/12 or better
<b>05</b>	18/16/14 or better
<b>10</b>	20/18/15 or better
<b>20</b>	22/19/16 or better

### Housing Dimensions

mm (inch)



Note: A1 = A side = Right Side  
B2 = B side = Left Side



Items not in bold are non-standard and may have a longer lead time

# Pressure Filters

Flows to 22 L/min (6 USgpm)  
Pressures to 310 bar (4500 PSI)

## OFPH03, OFPH05 Series

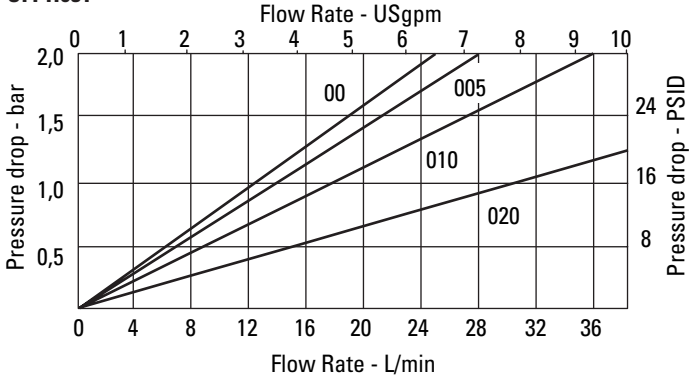
### Flow versus pressure drop:

150 SUS (32 cSt) oil with specific gravity of  $\leq 0.9$

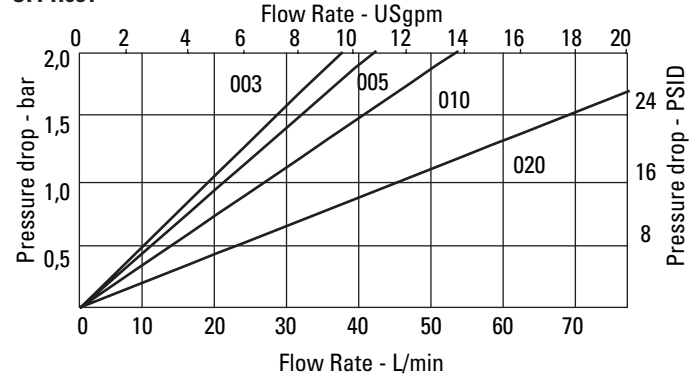
### Flow Data

#### Element Flow Data

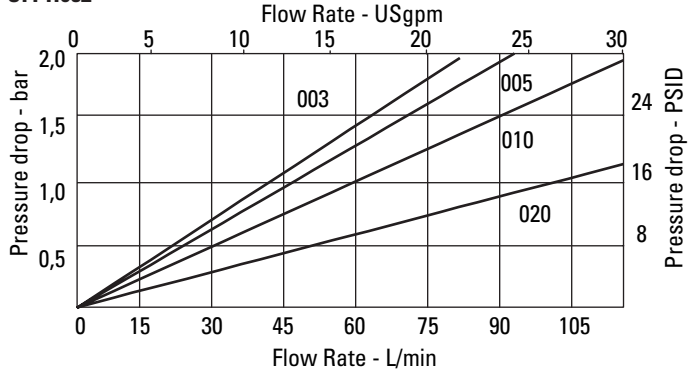
OFPH031



OFPH051

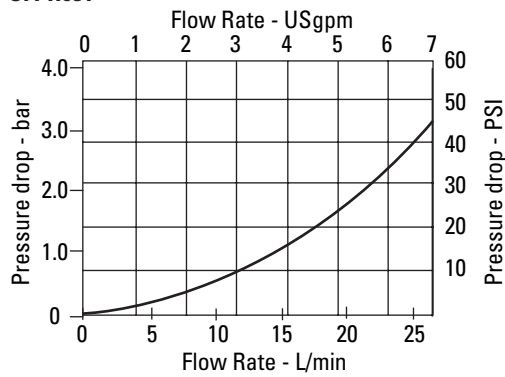


OFPH052

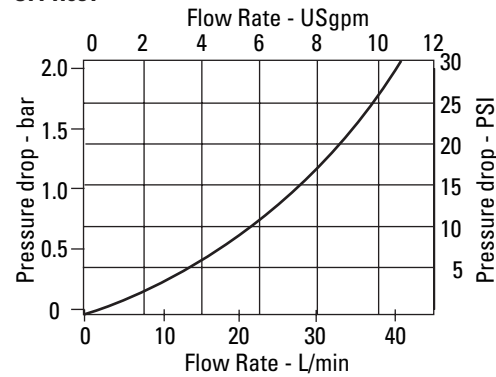


#### Housing Flow Data

OFPH031



OFPH051



OFPH052

