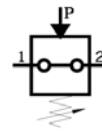
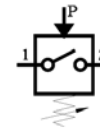


Pressure Switches G1/8", G1/4"



Break contact



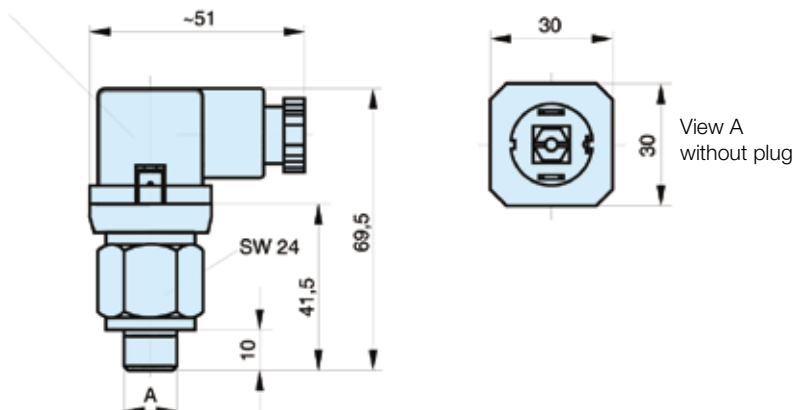
Make contact

Characteristics		Material	
Safety pressure relief P _{max}	300 bar	Housing	Passivated steel
Port size	G1/8, G1/4	Diaphragm	Buna N
Weight (mass)	0.090 kg	Switching function	
Medium and ambient T _{max} temperature range	+100 °C	Make contact	Closes the circuit when the set pressure is reached
Switch back difference	Max. 5 - 15%	Break contact	Interrupts the circuit when the set pressure is reached
Voltage	Max. 48 V		
Current	0.5 A		
Electrical connection	Plug contacts, plug		
Degree of protection	IP 65 with plug		
Switching frequency	Max. 200 s/min		

Dimensions and order instructions

Order instructions	Port size (bar)	Function	Setting range	Order code	Type	A
PR / 0.1-1 NC ST 1/4 48	G1/4	Break contact	0.1-1	KL3439		
PR / 0.1-1 NO ST 1/4 48	G1/4	Make contact	0.1-1	KL3440		
PR / 1-10 NC ST 1/8 48	G1/8	Break contact	1-10	KL3437		
PR / 1-10 NC ST 1/4 48	G1/4	Break contact	1-10	KL3436		
PR / 1-10 NO ST 1/8 48	G1/8	Make contact	1-10	KL3438		
PR / 1-10 NO ST 1/4 48	G1/4	Make contact	1-10	KL3435		

Plug can be turned 90°



Dimensions in mm