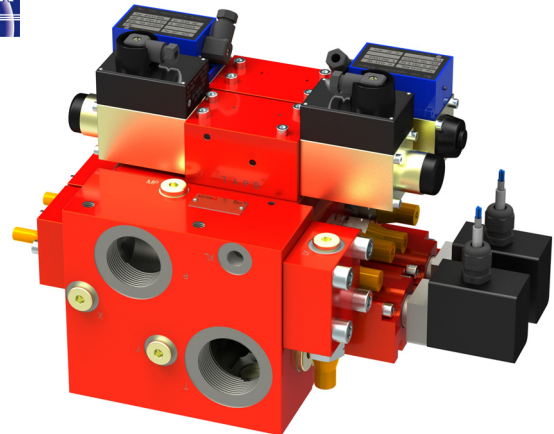
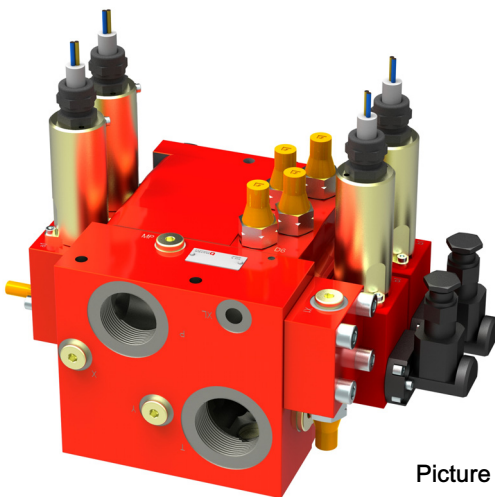





Proportional Valve in Ex-Version

Series SC18



Picture 1

-  II M2 c I
-  II 2G c I T4
-  II 2 c I T4

Picture 2

-  II M2 c I

1 Description

1.1 Generals

Our proportional load-sensing valves of the SC and SVC series are suitable for applications in hazardous areas. Such as mining, offshore and for industrial applications which need such protection measures. Our valves are approved according to ATEX and IECEx for the explosion

zones 1 and 21 with the corresponding equipment categories 2G, 20 and M2. The certification of our valves of MSHA-certificate for mining applications in North America- is in progress. All valves are available with an approved position sensor to monitor the spool position.

1.2 Application examples

- Mining
- Tunnel
- Offshore

1.3 Related Documents

Document	Purpose
Technical data sheet: SC18: 100-P-9050089	Technical documentation with all relevant descriptions, data characteristic lines and measurements

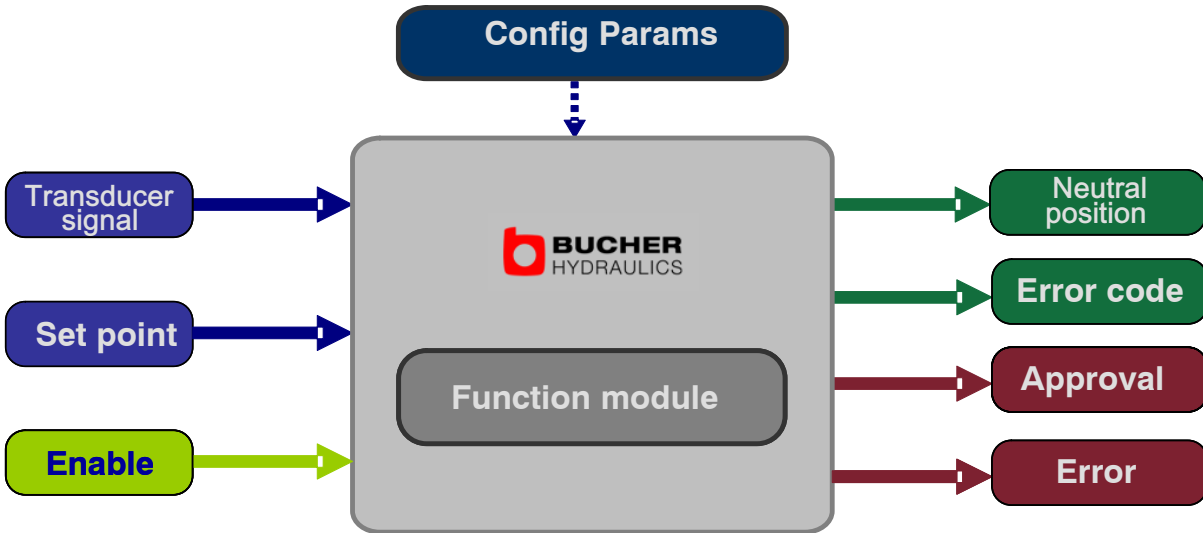
2 Available ATEX - Certificates

Components	Classification Areas	Categories 94/9/EG	Type of protection	Temperatur
Picture 1	Zone 1, Zone 21	2G, 2D, M2	„d“ (EN 60079) „mb“ (EN 60079)	T4 (2G) T130°C (2D)
Picture 2	Mining	M2	„ia“ (EN 60079)	

3 Function module

We are able to offer software modules for implementation in a paramount Controller (SPS or microcontroller). Due to that it is possible to create a position control via the support of the transducer in the higher piloting. Also to adjust it, and control the neutral position of the spool.

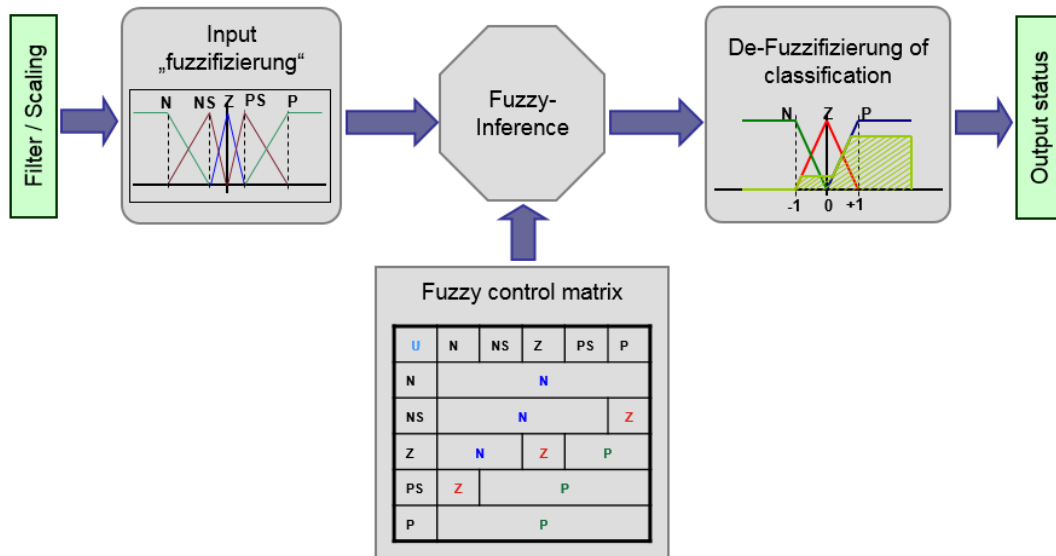
For example, there are modules for a continuous monitoring and evaluation of the main spool position, and the dissemination of error and reset messages to the controller. This module is a purely passive system that provides exclusively information.



4 Fuzzy decision system

The module is based on a fuzzy decision system that uses the fuzzy rule matrix, determines whether the slider is set to

zero or not. If there is a discrepancy between desired and actual position the module produce an error message.



info.kl@bucherhydraulics.com

www.bucherhydraulics.com

© 2015 by Bucher Hydraulics Remscheid GmbH, D-42864 Remscheid

All rights reserved.

Data is provided for the purpose of product description only, and must not be construed as warranted characteristics in the legal sense. The information does not relieve users from the duty of conducting their own evaluations and tests. Because the products are subject to continual improvement, we reserve the right to amend the product specifications contained in this catalogue.

Classification: 450..